

**Editing
Panasonic AVCHD Footage
with Thomson Grass Valley EDIUS 4.6 and
EDIUS 5 NLE Software**

October 2008

A 'How to' Guide from Holdan

Introduction.

Grass Valley EDIUS fully supports editing native AVCHD files copied straight from your Panasonic AVCHD camcorder, or to obtain much better real time performance you can convert the AVCHD files to Canopus HQ files. This guide will explain how to do this.

Make sure you have the 2.12 version or later of the Canopus AVCHD2HQ software which can be downloaded free of charge from www.canopus.com

After installing AVCHD2HQ configure it to put clips in the open EDIUS Project.

Step 1

Connect the Camera to your PC via USB.

Make sure Panasonic Camcorder is in PC mode. On the AG-HMC71 use the dial on the handgrip around the start stop button and select the blue, PC Mode.

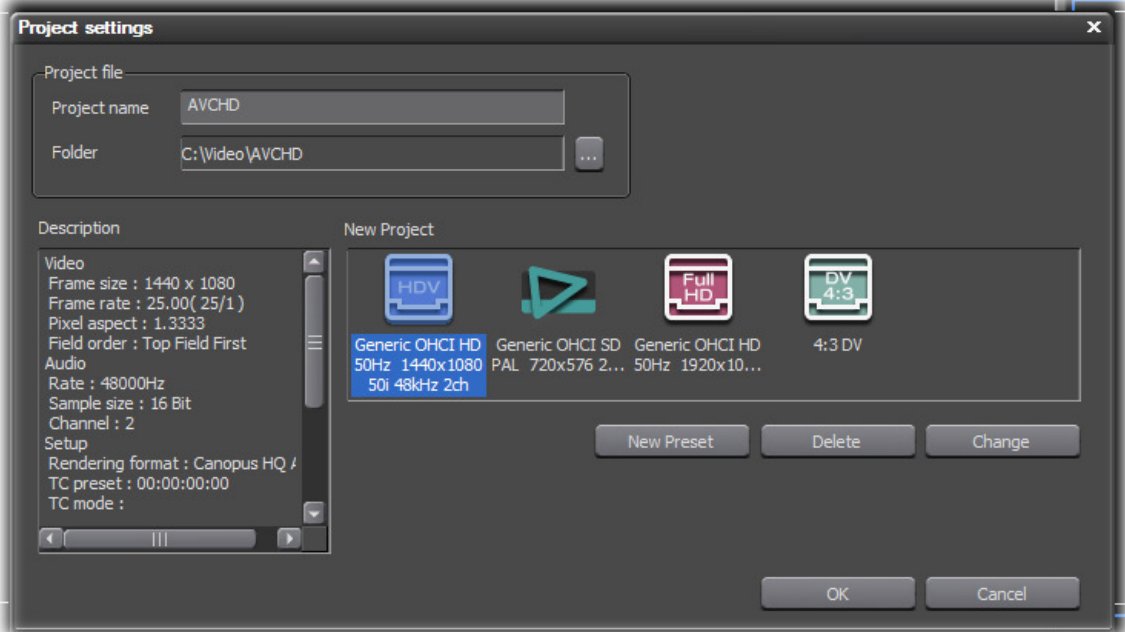
On the AG-HMC151 press and hold down the Mode button to put the camera in PC mode as per the instructions.

Note. If you have an SD Card Reader you can simply insert SD card in card reader.

Step 2

Start a new project in EDIUS that matches the setting you recorded the footage at on the camera. This could be Generic OHCI HD 50hz 1440X1080 settings or 1920X1080 or equivalent hardware setting if you have an NX, SP, or HDSTORM card.

Open an HDV project (1440X1080 or 1920 X1080)



Step 3

Double click in the empty bin and navigate to the Stream folder on the SD Card

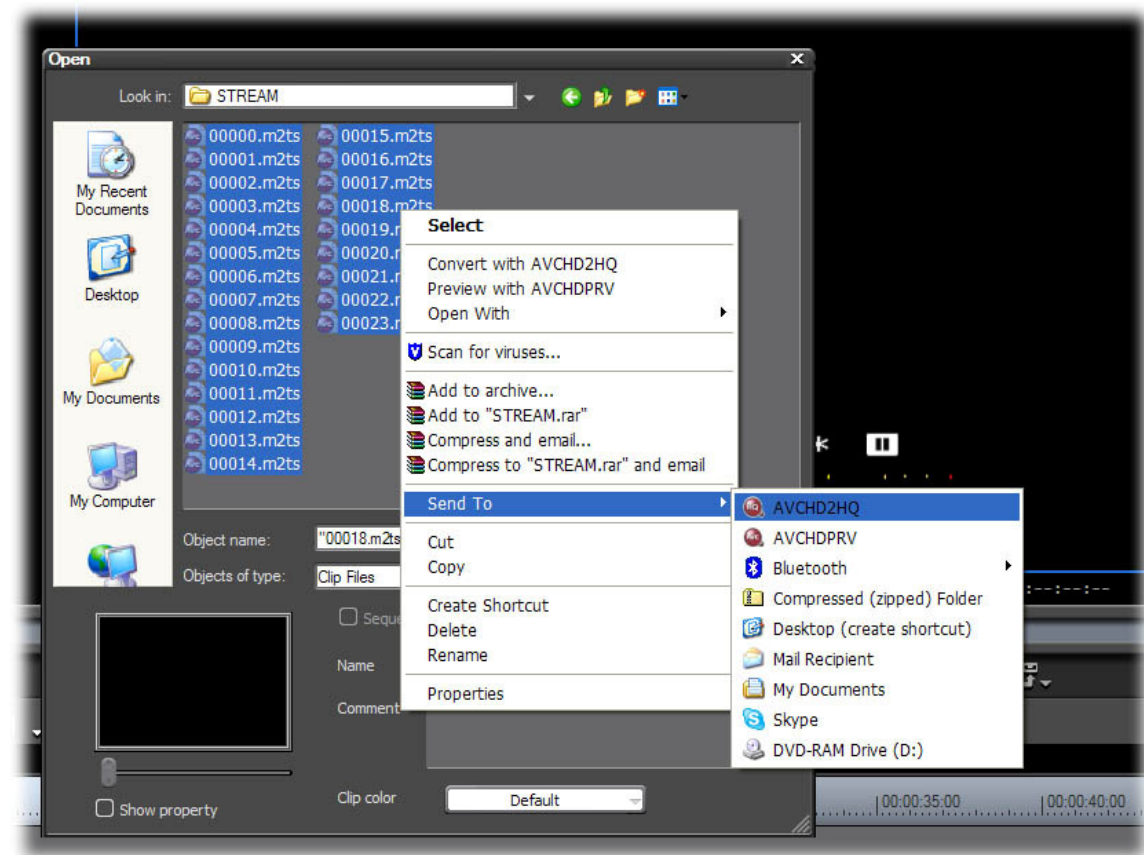
This will be on the removable drive that popped up when you connected the camera or inserted the SD card into a card reader.

E:\PRIVATE\AVCHD\BDMV\STREAM is the location of the clips when the removable drive / Camera is designated **E:**

Select all the **.MTS** files that you wish to use in your project, right click on the selection and go to **Send to AVC2HQ.**

Once you have done this you can close the 'Open' dialogue box. This will transcode the AVCHD files, and copy the new HQ files into your EDIUS Project Folder as fast as possible.

Note. The HQ .avi files can take up to 10 times the space that the original AVCHD files used.



Note. If you have a multiple processor system it will convert multiple files simultaneously. If your system returns an error message it may be because it is trying to put the transcoded HQ avi files back onto the small memory card. If this is the case make sure you configure the AVCHD2HD software correctly.

